


# Shadow of the Almighty

## Psalm 91


**INTRO** F#m C#m D



He who dwells in the shelter of the Most High will abide in the shadow of

**VERSE** A

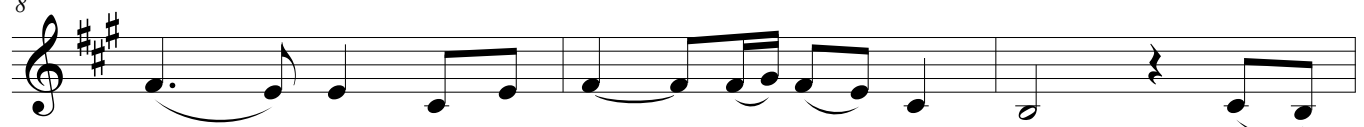
4 E F#m DM7 E



the Almighty!


I will say to the LORD, my refuge,  
He will comfort me.  
A thousand times he has delivered me from all my troubles.  
You will tread on the lions and

8 D A D A E



repin side re ad  
fuge ions; you, fuge; der,  
and you'll and the tram  
my take ten Most ple  
fort; re thou High ser  
my fuge sand my pents,  
God un der at dwell li  
I his your ing ons  
trust, wings. right. place. young.  
For he'll And his won't  
No He has

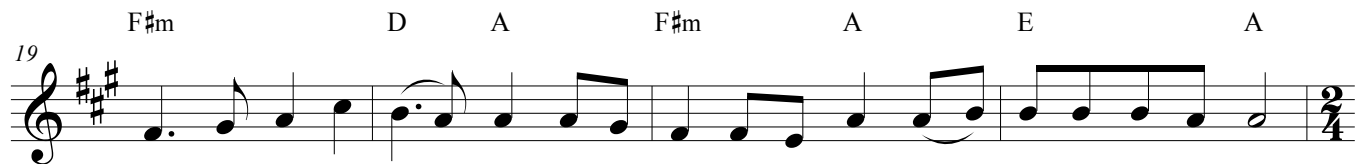
11 F#m D A E



save you from the fowler's snare, from the dead ly pes ti lence.  
truth is a shield and buck ler; you will ne ver be a fraid.  
come near to you; you'll on ly look; see the wi cked re paid in your sight.  
e vil will come u pon him; him ex alt, for he knows my plague.  
loved me so I will save him; him ex alt, for he knows my name.

**PRECHORUS**

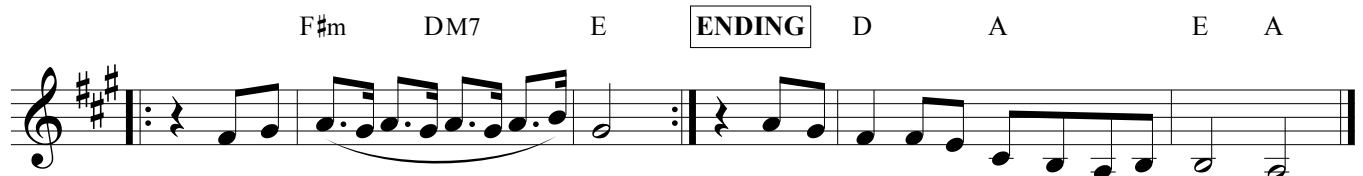
Not of ter ror that comes at night time, nor by day of the ar row's flight. Not of  
 For his an gels he will com mand for you, to guard you in all your ways. They will  
 When he calls to me, I will an swer; in dis tress I am with him. I will



plague that walks in dark ness, nor di sease that de stroys when the sun is at its height!  
 lift you up on their hands, so that e ven a stone your foot will ne ver graze!  
 res cue him, and ho nor him, fill him up with long life; my sal va tion show to him!

**CHORUS**

He who dwells in the shel ter of the Most High will a bide in the sha dow of



the Al might y! He'll a bide in the sha dow of Al might y.